



## REGIONAL SPECIALISED METEOROLOGICAL CENTRE-TROPICAL CYCLONES, NEW DELHI SPECIAL TROPICAL WEATHER OUTLOOK

**DEMS-RSMC TROPICAL CYCLONES NEW DELHI DATED 17.10.2024**

**SPECIAL TROPICAL WEATHER OUTLOOK FOR NORTH INDIAN OCEAN (THE BAY OF BENGAL AND THE ARABIAN SEA) VALID FOR NEXT 168 HOURS ISSUED AT 0300 UTC OF 17.10.2024 BASED ON 0000 UTC OF 17.10.2024.**

### **BAY OF BENGAL:**

**SUB: DEPRESSION CROSSED NORTH TAMIL NADU AND SOUTH COASTAL ANDHRA PRADESH COASTS CLOSE TO NORTH OF CHENNAI**

THE DEPRESSION OVER WESTCENTRAL AND ADJOINING SOUTHWEST BAY OF BENGAL MOVED WEST-NORTHWESTWARDS WITH A SPEED OF 14 KMPH DURING PAST 6 HOURS AND CROSSED NORTH TAMIL NADU - SOUTH ANDHRA PRADESH COASTS BETWEEN PUDUCHERRY AND NELLORE, CLOSE TO NORTH OF CHENNAI, NEAR LATITUDE 13.5 N AND LONGITUDE 80.2 E AROUND 2300 UTC OF 16TH OCTOBER. SUBSEQUENTLY, IT WEAKENED INTO A WELL MARKED LOW PRESSURE AREA AND LAY OVER SOUTH COASTAL ANDHRA PRADESH AND ADJOINING NORTH COASTAL TAMIL NADU AT 0000 UTC OF THE 17TH OCTOBER, 2024.

IT IS LIKELY TO CONTINUE TO MOVE WEST-NORTHWESTWARDS AND WEAKEN FURTHER INTO A LOW PRESSURE AREA DURING NEXT 12 HOURS.

AT 0000 UTC, THE INSAT-3D IMAGERY INDICATE INTENSE TO VERY INTENSE CONVECTION OVER KARNTAKA, TELANGANA, RAYALSEEMA, COASTAL ANDHRA PRADESH (MINIMUM CLOUD TOP TEMPERATURE IS MINUS 70-80°C). MODERATE TO INTENSE CONVECTION IS SEEN OVER TAMILNADU AND KERALA.

THE ASSOCIATED ESTIMATED CENTRAL PRESSURE IS 1004 HPA AND MAXIMUM SUSTAINED WIND SPEED WITH THE SYSTEM IS 15 KTS GUSTING TO 25 KTS.

### **WARNINGS:**

#### **(I) WIND WARNING:**

SQUALLY WEATHER WITH WIND SPEED REACHING 25-35 KMPH GUSTING TO 45 KMPH IS LIKELY TO PREVAIL OVER WESTCENTRAL BAY OF BENGAL AND ALONG & OFF TAMIL NADU, PUDUCHERRY AND SOUTH ANDHRA PRADESH COASTS DURING NEXT 06 HOURS.

#### **(II) SEA CONDITION:**

MODERATE TO ROUGH SEA CONDITION IS LIKELY TO PREVAIL OVER WESTCENTRAL BAY OF BENGAL AND ALONG & OFF TAMIL NADU, PUDUCHERRY AND SOUTH ANDHRA PRADESH COASTS DURING NEXT 06 HOURS.

**(III) FISHERMEN WARNING:**

FISHERMEN ARE ADVISED NOT TO VENTURE INTO WESTCENTRAL AND ADJOINING SOUTHWEST BAY OF BENGAL TILL NOON OF 17TH OCTOBER.

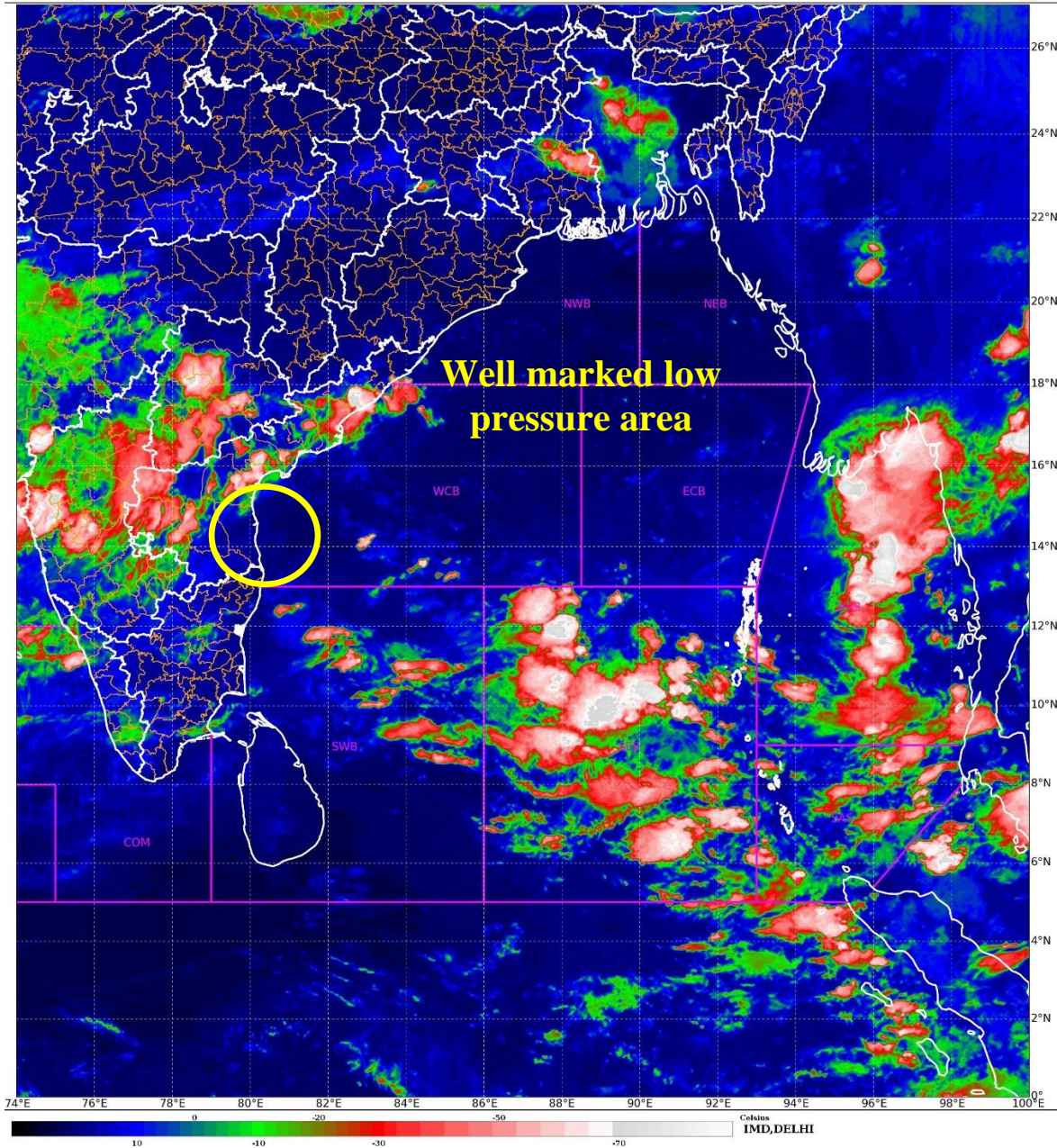
**REMARKS:**

OVER THE BAY OF BENGAL, CFS-NCICS BASED FORECAST INDICATES STRONG WESTERLY WINDS (5-7 MPS) OVER SOUTH BOB AND ADJOINING EQUATORIAL INDIAN OCEAN AND STRONG EASTERLY WINDS (5-7 MPS) OVER WESTCENTRAL BAY OF BENGAL. MJO & KELVIN WAVES ALONGWITH ROSSBY WAVES ARE ALSO LIKELY OVER THE BAY OF BENGAL DURING NEXT 5 DAYS. THESE FEATURES MAY SUPPORT CONVECTIVE ACTIVITY OVER WESTCENTRAL BAY OF BENGAL AND SOUTHERN PENINSULAR INDIA. AS PER ECMWF BASED MADDEN JULIAN OSCILLATION GUIDANCE, IT IS CURRENTLY IN PHASE 4 WITH AMPLITUDE GREATER THAN 1 AND IS LIKELY TO MOVE TO PHASE 5 DURING SUBSEQUENT 5-6 DAYS WITH AMPLITUDE REMAINING MORE THAN 1. THUS MJO IS FAVOURABLE FOR ENHANCEMENT OF CONVECTIVE ACTIVITY OVER BAY OF BENGAL.

IMDGFS IS INDICATING A FRESH LOW PRESSURE AREA OVER EASTCENTRAL BOB ON 21<sup>ST</sup> WITH NORTHWESTWARDS MOVEMENT TOWARDS ODISHA COAST ON 24<sup>TH</sup> OCT. NCUW IS INDICATING WESTWARD MOVEMENT OF CYCLONIC CIRCULATION AND EMERGENCE INTO EASTCENTRAL ARABIAN SEA (AS) ON 18<sup>TH</sup> AS AN EXTENDED LOW AND NEARLY WEST-NORTHWESTWARDS MOVEMENT TOWARDS GULF OF ADEN AS A CYCLONIC CIRCULATION/LOW PRESSURE AREA TILL 29<sup>TH</sup> OCT. IT IS ALSO INDICATING EMERGENCE OF A CYCLONIC CIRCULATION FROM GULF OF THAILAND INTO NORTH ANDAMAN SEA ON 24<sup>TH</sup> OCT, BECOMING LOW PRESSURE AREA (LPA) ON 25<sup>TH</sup> OVER NORTH ANDAMAN SEA & DEPRESSION OVER EASTCENTRAL BOB ON 26<sup>TH</sup> OVER EASTCENTRAL BOB. NCEP GFS IS INDICATING A FRESH LOW PRESSURE AREA ON EASTCENTRAL AS ON 18<sup>TH</sup> WITH WEST-NORTHWESTWARDS MOVEMENT TOWARDS GULF OF ADEN TILL 22<sup>ND</sup> OCT & LESS MARKED THEREAFTER. MODEL IS ALSO INDICATING EMERGENCE OF A LOW PRESSURE AREA/CYCLONIC CIRCULATION INTO NORTH ANDAMAN SEA ON 21<sup>ST</sup> FROM GULF OF THAILAND, BECOMING DEPRESSION OFF SOUTH MYANMAR COAST ON 21/12 UTC, CYCLONIC STORM OVER EASTCENTRAL BOB ON 22/06 UTC, INTENSIFYING FURTHER AND MOVING NEARLY NORTH-NORTHWESTWARDS TILL 22/12 UTC & NORTHWARDS THEREAFTER REACHING BANGLADESH COAST ON 23/18 UTC AS AN INTENSE CYCLONIC STORM. ECMWF IS INDICATING A FRESH LOW PRESSURE AREA OVER EASTCENTRAL ARABIAN SEA ON 17/12 UTC, MOVING TOWARDS GULF OF ADEN TILL 21<sup>ST</sup> OCT AND LESS MARKED THEREAFTER.

***THIS IS LAST UPDATE ABOUT THE SYSTEM. HOWEVER, REGULAR TROPICAL WEATHER OUTLOOK AND BULLETIN WILL CONTINUE FROM THE REGIONAL SPECIALIZED METEOROLOGICAL CENTRE, NEW DELHI FOR RELEVANT INFORMATION ABOUT THE REMNANT OF THE SYSTEM.***

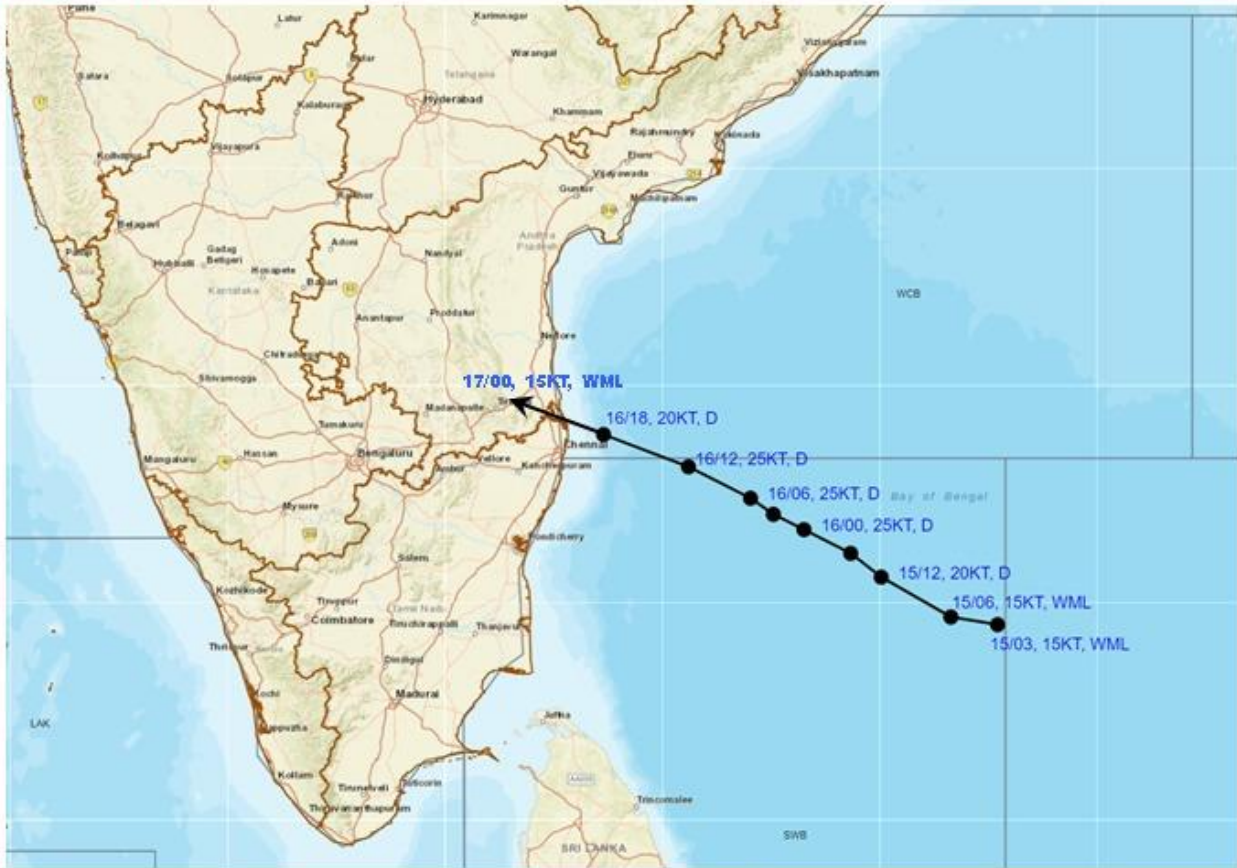
(DR D. R. PATTANAİK)  
SC. F, RSMC, NEW DELHI



Cloud distribution: (a) Isolated: <25%, Scattered:25-50%, Broken: 51-75%, Solid:>75%, Convection Intensity: (a) Weak: Cloud Top Temperature (CTT) >-25°C, (b) Moderate: CTT: - 25°C to -40°C, (c) Intense: CTT: - 41°C to -70°C and (d) Very Intense: : Less than -70°C  
PROBABILITY OF CYCLOGENESIS (FORMATION OF DEPRESSION):NIL: 0%, LOW: 1-33%, , MODERATE: 34-66% AND HIGH: 67-100%  
This is a guidance Bulletin for WMO/ESCAP Panel Member countries. Visit respective National websites for Country specific Bulletins



## OBSERVED TRACK OF DEPRESSION OVER BAY OF BENGAL DURING 15<sup>TH</sup> TO 17<sup>TH</sup> OCTOBER, 2024



DATE/TIME IN UTC

IST=UTC + 0530

L: LOW PRESSURE AREA

WML: WELL MARKED LOW PRESSURE AREA

D: DEPRESSION (17-27 KT)

DD: DEEP DEPRESSION (28-33 KT)

CS: CYCLONIC STORM (34-47 KT)

SCS: SEVERE CYCLONIC STORM (48-63KT)

VSCS: VERY SEVERE CYCLONIC STORM (64-89 KT)

ESCS: EXTREMELY SEVERE CYCLONIC STORM (90-119 KT)

SuCS: SUPER CYCLONIC STORM (≥ 120 KT)

● LESS THAN 34 KT

○ 34-47 KT

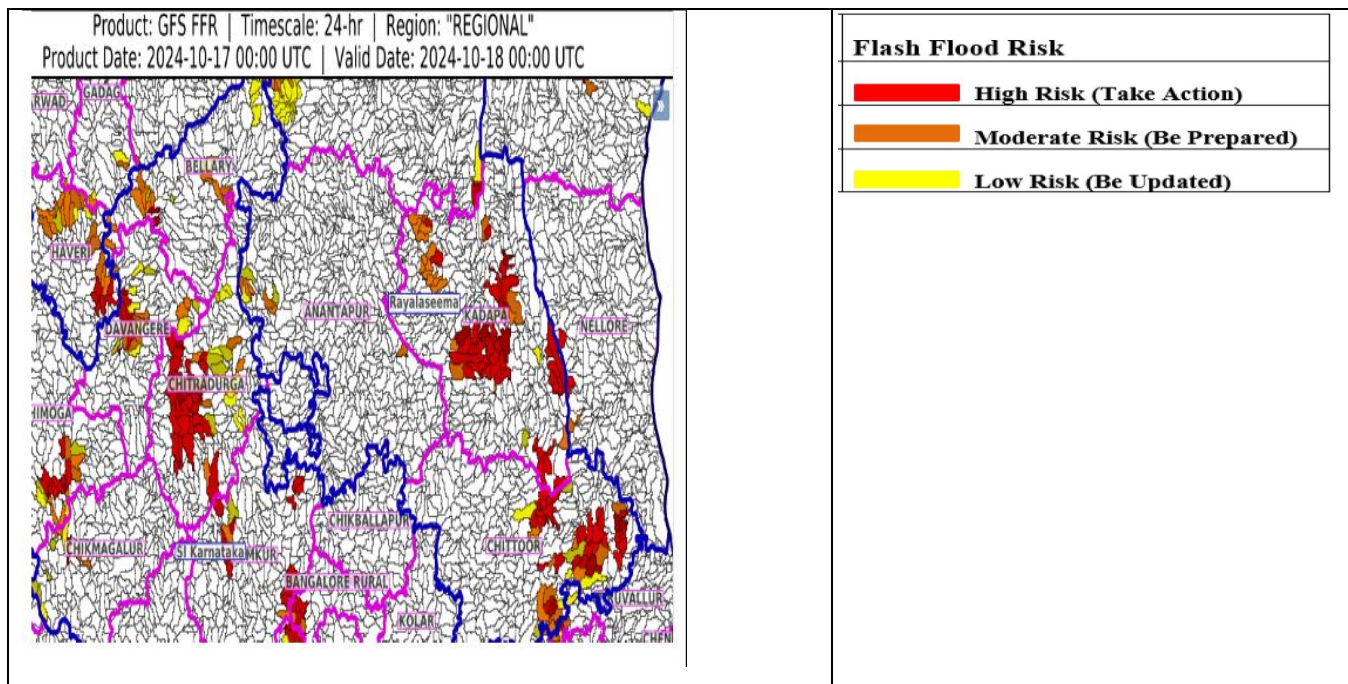
○ ≥ 48 KT

— OBSERVED TRACK

— FORECAST TRACK

▲ CONE OF UNCERTAINTY

## Flash Flood Guidance



**24 hours Outlook for the Flash Flood Risk (FFR) till 1730 IST of 17-10-2024 :**

Low to Moderate flash flood risk likely over few watersheds & neighbourhoods of following Met Sub-divisions during next 24 hours.

**Coastal AP & Yanam** - Prakasam and Nellore districts.

**Rayalaseema – Chittoor, Kurnool, Anantpur and Kadapa districts.**

Surface runoff/ Inundation may occur at some fully saturated soils & low-lying areas over AoC as shown in map due to expected rainfall occurrence in next 24 hours.

## Fishermen Warning Graphics

